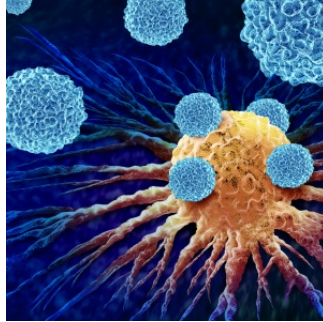

Microsoft and Paige to Develop the Largest Image-Based AI Model in the World for Beating Cancer



Paige, a healthcare technology disrupter, has partnered with Microsoft in the battle against cancer, advancing their joint efforts to transform cancer diagnosis and patient treatment. They aim to achieve this by constructing the world's largest image-based artificial intelligence (AI) model for digital pathology and oncology.

Paige has developed the creation of the first Large Foundation Model using over one billion images derived from more than half a million pathology slides across various cancer types. In collaboration with Microsoft, Paige is currently developing an entirely new AI model, which boasts a magnitude of size larger than any other image-based AI model.

This new model captures the subtle complexities of cancer which can be employed in the next generation of medical applications and computational biomarkers.

Razik Yousfi, SVP of Technology at Paige, confirmed, “through the development of this model, we will help improve the lives of the millions of people who are affected by cancer every day”.

Paige is integrating a vast collection of up to four million digitised microscopy slides, encompassing multiple types of from its unparalleled petabyte-scale clinical data archive. Leveraging Microsoft's advanced supercomputing infrastructure to train the technology, the goal is to eventually deploy it to hospitals and laboratories worldwide.

Desney Tan, Vice President and Managing Director, Microsoft Health Futures, emphasised, “By combining Microsoft's world-class research and cloud infrastructure with Paige's deep expertise and large-scale data, we are creating new AI models that will enable unprecedented insights into the pathology of cancer”.

Source: [Paige](#)

Image Credit: [iStock](#)

Published on : Fri, 15 Sep 2023