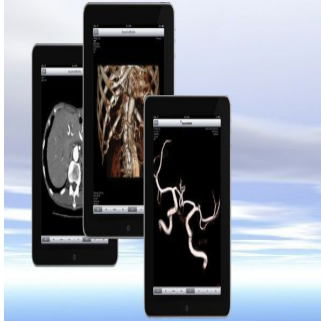


## #ECR2015: TeraRecon Demonstrates Advanced Enterprise Image Enablement



TeraRecon, a leading provider of enterprise medical image management and advanced visualisation solutions, unveiled the latest release of the company's flagship iNtuition™ enterprise viewing solutions working in seamless combination with the second-generation of its powerful iNteract+™ interoperability platform at the Annual European Congress of Radiology (ECR) meeting taking place in Vienna, March 4th – 8th.

TeraRecon has remained the world's leading independent advanced 3D visualisation solution provider, with an impressive array of exciting new clinical features being debuted at this year's event, including among others, expanded cardiac MR processing capabilities, dynamic multi-modality volume fusion, enhanced editing features for complex interventional exams & optimised low dose workflow enhancements.

Randolph Sternberg, EU Director of Sales stated, "TeraRecon continues to innovate and deliver the highest level of clinical performance with an ever-broadening range of advanced visualisation tools. Equally important are our new iNteract+ technologies that allow our viewers to intelligently display images and clinical information in context, to promote informed imaging workflows in ways never before possible."

The company provides a much more powerful viewer that is capable of morphing from a simple image-enablement viewer for visible light studies, while elsewhere providing some of the most advanced diagnostic radiology and cardiology interpretation tools available. It can move seamlessly between all forms of mobile platforms and back to enhance physician collaboration and promote patient engagement.

Source and image credit: [TeraRecon](#)

Published on : Fri, 6 Mar 2015