



HEALTHCARE EXECUTIVE ALLIANCE
SPECIAL SUPPLEMENT

Value-Based Healthcare

- VBHC IN 2017, *M. PORTER & R. KAPLAN*
- FOUR STEPS WITHIN YOUR STRIDE, *E. TEISBERG & S. WALLACE*
- FIVE REASONS VBHC IS BENEFICIAL, *M. FAKKERT ET AL.*
- INTERNATIONAL VALUE-BASED HEALTHCARE, *N. KAMPSTRA ET AL.*
- DOES MORE VALUE NATURALLY LEAD TO BETTER CARE? *P. KAPITEIN*
- VALUE-BASED RADIOLOGY: VIEW FROM EUROPE, *H-U. KAUCZOR*
- VALUE-BASED RADIOLOGY: VIEW FROM THE U.S., *I. WEISSMAN*
- VALUE-BASED HEALTHCARE FOR HEART PATIENTS, *D. VAN VEGHEL ET AL.*
- VALUE IN CARDIOLOGY, *P. CASALE*



HEALTHMANAGEMENT.ORG
WELCOMES NEW IT EDITOR-
IN-CHIEF IT, CHRISTIAN LOVIS

HOW TWITTER IS
CHANGING THE
CONGRESS EXPERIENCE,
M. CHRISTODOULIDOU

DEVELOPING THE ROLE OF
CIO IN HEALTHCARE
MANAGEMENT, *M. KEARNS*

WHITE COATS IN
THE BOARDROOM, *D. CRAIG*

ROBOTIC ULTRASOUND
IMAGING, *S. ADAMS ET AL.*

3D PRINTING,
P. BRANTNER ET AL.

NEOADJUVANT
CHEMOTHERAPY FOR
BREAST CANCER,
S. DELALOGUE ET AL.

SCATTER RADIATION
EXPOSURE DURING MOBILE
X-RAY EXAMINATIONS,
A. ABRANTES ET AL.

CT AND MRI MARKET IN
CYPRUS, *M. KANTARIS ET AL.*

APPS FOR CARDIOVASCULAR
DISEASE, *L. NEUBECK ET AL.*

DOES TECHNOLOGY GAP
CAUSE MEDICAL ERRORS?
D. VOLTZ

U.S. HEALTHCARE TO
BE TRUMPED UP,
J.W. SALMON

ZOOM ON PROFILES

Neoadjuvant Chemotherapy

Unanswered Questions

The value and importance of multidisciplinary teams in breast cancer was demonstrated at the European Society of Breast Imaging (EUSOBI) congress in Paris in October 2016, when oncologists, radiologists, pathologists and surgeons spoke at a session on neoadjuvant chemotherapy.

Rationale for Neoadjuvant Treatment



Suzette Delalogue

Associate Professor of Medical Oncology
Head of Breast Cancer Department
Gustave Roussy Institute
Paris, France

suzette.delalogue@gustaveroussy.fr

Neoadjuvant chemotherapy (NAC): the expected benefits must be real!

Several clinical benefits are expected from NAC: lesser extent of surgery, better long-term control of the disease, gaining prognostic information. The only proven patient benefit, however, is to increase the rate of subsequent breast conservation. To ensure that conserving surgery is feasible and to avoid axillary clearance if possible, thorough initial and on-treatment evaluation of disease extent is essential. The patient's genetic background should be informed. The need for chemotherapy must be certain (use of gene profiling?) and the magnitude of response realistic (avoid luminal A or lobular subtypes).

What do we currently know about NAC?

In terms of survival and disease progression, NAC has been found equivalent to adjuvant chemotherapy (Mauri et al. 2005). Regarding tumour response, the effect of NAC is heterogeneous across cancer subtypes. The effect is major and includes nodal downstaging in HER2-positive and triple negative cancers (ie, $\geq 50\%$ and 40-50% of pathologic complete response (pCR), respectively) but limited in breast and nodes in luminal (ER+ HER2-negative) cancers (ie, 10-15% pCR). A recent meta-analysis showed a differential association between pCR and event-free survival (EFS) among cancer subtypes with highest prognostic value in aggressive tumours, but could not validate pCR as a surrogate for improved survival in the overall study population (Cortazar et al. 2014). In the HER2+ subtype, there is evidence suggesting that pCR might, however, be a surrogate endpoint for survival, with best outcome occurring in hormone receptor (HR)-negative tumours with breast and node complete response (Gianni et al. 2016).

What are the therapeutic prospects?

► Regarding the issue of response-guided treatment data are, as yet, still investigational. In the exploratory GeparTrio trial, longer disease-free survival (with

marginal benefit in overall survival) was found when switching early HR-positive “non-responders” by clinical and conventional imaging evaluation to a different chemotherapy regimen (von Minckwitz et al. 2013). The AVATAXHER trial, a phase 2 study, was conducted in HER2+ breast cancer patients with [18F]-FDG PET assessment of response after one cycle of chemotherapy (Coudert et al. 2014). In patients deemed unlikely by PET to respond to standard docetaxel plus trastuzumab therapy, the addition of bevacizumab increased the rate of pCR (43.8%) compared with findings in the standard arm (pCR 24%). However, several clinical issues such as unknown survival benefit, use of suboptimal therapy, finding of discordant results with bevacizumab in other breast cancer studies, prevented further application of this imaging-guided therapy explains Dr. Delalogue.

“ THOROUGH INITIAL AND ON-TREATMENT EVALUATION OF DISEASE EXTENT IS ESSENTIAL ”

► An area of research is to use residual disease for its prognostic and potentially predictive value of response to (adjuvant) therapy targeted on the tumour biomarkers. Residual disease could contain resistant clones, eventually causing metastatic recurrence and death. Advanced genome sequencing would allow identifying these “lethal clones”, hence eradicating them through treatments targeted on specific genomic alterations. Furthermore, surveillance targeted on circulating tumour DNA could permit early detection of relapse.

► Two other concepts are currently being investigated to 1) identify new effective therapies, 2) search for predictive biomarkers and 3) obtain early assessment of response. One uses a therapeutic “window-of-opportunity” design where patients receive an investigational agent for a short time prior to NAC. Biologic



Fabienne Thibault

Radiologist
Institut Curie
Paris, France

fabienne.thibault@curie.fr

effects of the agent are assessed by molecular analysis or functional imaging (currently, PET imaging). The second concept uses an adaptive design allowing for rapid testing of multiple new agents in combination with standard chemotherapy. The I-SPY 2 trial is such a phase 2 trial, where early Bayesian estimation of pCR, histologically validated at the end of the study, is used to adapt ongoing patient randomisation to investigational arms (Park et al. 2016). The MR imaging component of the trial (ACRIN 6657) showed the better performance of tumour volume change over clinical size predictors for early response assessment (Hylton et al. 2012), and the predictive value of the quantitative “functional tumour volume” parameter regarding recurrence-free survival with a median follow-up time of 3.9 years (Hylton et al. 2016).

► For luminal cancers, a new paradigm could be to replace chemotherapy by endocrine therapy with good clinical

results and lesser toxicity. The NEOPAL trial (clinicaltrials.gov/ct2/show/NCT02400567) addresses this issue of a possible therapeutic de-escalation in luminal tumours by comparing conventional chemotherapy with an association of endocrine and targeted therapy.

Conclusion

To decide which of primary systemic or surgical treatment is best for each patient, multidisciplinary team discussion is crucial. The decision is based on assessment of the initial breast and axilla tumour burden, where imaging is most contributive, and on tumour biology. The expected benefits from current neoadjuvant treatments are to perform less axillary surgery along with defining more personalised therapy based on the individual clinical prognosis and on tumour sensitivity. Both issues are of research in imaging with functional and quantitative analyses.

Importance of the Histopathological Definition of pCR

Pathological complete response (pCR) has been proposed as a surrogate endpoint for prediction of long-term clinical benefit—event-free survival (EFS) and overall survival (OS).

Pathologist’s Role

Before neoadjuvant chemotherapy a core needle biopsy is performed to determine:

- Tumour histological type + DCIS component
- Tumour cellularity
- Predictive markers (ER, PR, HER2, Ki67)

After neoadjuvant chemotherapy the pathologist examines the surgical specimen in order to define pCR and to bank residual tumour tissues for molecular analysis.

To perform these analyses, cooperation between surgeons, radiologists and pathologists is essential, emphasised Dr. Salomon.

Molecular classification is based on immunohistochemistry (IHC) (**Figure 1**).

There is no consensus definition of pCR and different definitions have been used in major neoadjuvant trials. For example, some trials used a definition of pCR where DCIS is present, while others did not (Provenzano et al. 2015). An international working group has proposed the elements to be included in the pathologic evaluation and reporting of post-neoadjuvant systemic therapy breast cancer specimens (Provenzano et al. 2015).

Cortazar and colleagues (2014), in their pooled analysis of more than 11,000 patients, looked at the association between three definitions of pCR and event-free and overall survival by breast cancer subtype. They found the highest EFS and OS when pCR was defined as ypT0/Tis/ypN0 in the American Joint Committee on Cancer (AJCC) staging system. In breast cancers

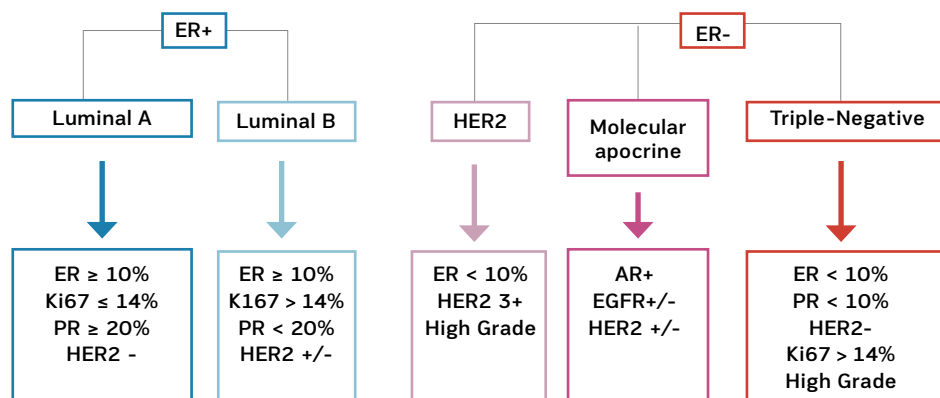


Figure 1. In Practice “Molecular” Classification Based on IHC

References: Cheang et al. 2008; 2009; Prat et al. 2013; Kennecke et al. 2010; Goldhirsh et al. 2012; Cirqueira et al. 2015, Blows et al. 2010



Anne Vincent-Salomon

Pathologist
Institut Curie
Paris, France

anne.salomon@curie.fr



Federica Pediconi

Assistant Professor
of Radiology
Sapienza University
Rome, Italy

federica.pediconi@uniroma1.it

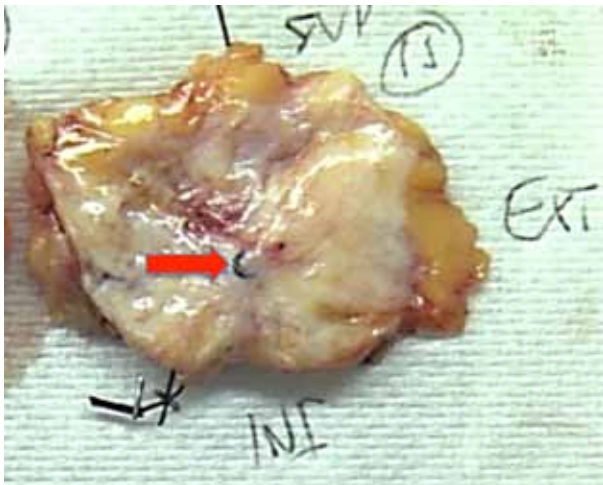


Figure 2.

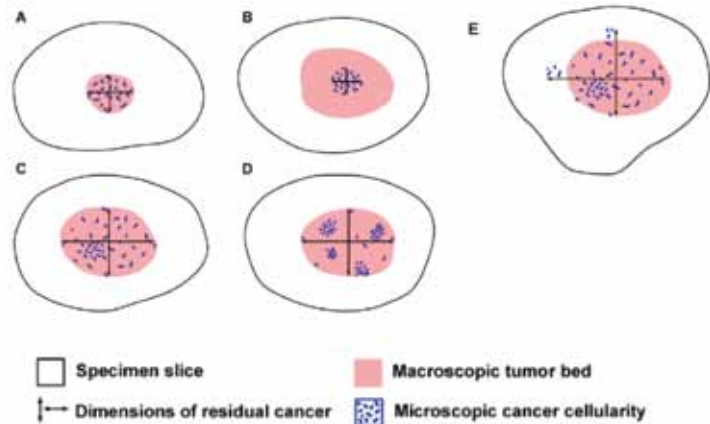
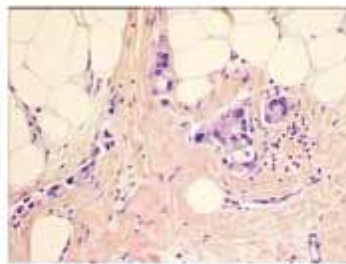
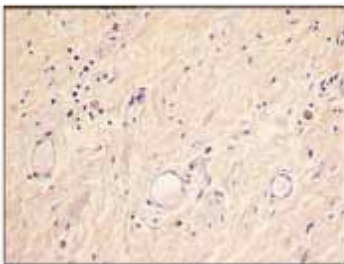


Figure 3. Adapted from Symmans et al. (2007)

Complete pathological response

Incomplete pathological response



Fibrosis without carcinomatous cells= residual stroma = macrophages + oedema + lymphocytic infiltrate

Figure 4.

that were grade 3, HER2+ and ER- PR- or triple negative they found a marked difference in survival between cases with pCR and those without pCR.

Standard for Post-Neoadjuvant Specimens

A standard for pathological evaluation of post-neoadjuvant specimens in clinical trials is required, says Dr. Salomon. This will include systematic sampling of areas identified by informed mapping of the specimens, close correlation with radiological findings and tumour banking for translational research. The residual cancer burden method is preferred, and the MD Anderson website has a calculator that automatically calculates the score (<https://iii.hm/86m>). There are three classes:

- RCB-I: minimal residual disease
- RCB-II: moderate RD
- RCB-III: extensive RD

Yp TNM should be included (Provenzano et al. 2015).

Symmans et al. (2007) recommended that tumour size, percentage of residual cells (both DCIS and invasive

cells), the number of metastatic nodes, and size of the lymph node metastasis (ypN+) should be used to calculate the residual cancer burden.

Correlation with the radiological image is essential for macroscopic analysis of the surgical specimen if there is no apparent residual tumour. Here the coil is important as is sampling oriented by the radiological size evaluation after chemotherapy (Figure 2).

The residual tumour size (ypT) definition is based on the histological size of residual disease (Figure 3)

Is pCR the Answer?

Pooled analyses (at a trial level) could not validate pCR as a surrogate marker of EFS and OS (Berruti et al. 2014; Cortazar et al. 2014).

As Rose et al. state (2016): "It is a maxim of statistics that correlation does not necessarily imply causation. Similarly, correlation does not necessarily imply surrogacy."

There is a need for other prognostic markers determined on residual disease after chemotherapy. Biomarkers under development have recently been reviewed (Penault-Llorca and Radosevic-Robin 2016). Genomic analysis also shows potential (Gu and Fuqua 2016).

Conclusion

In assessing efficacy of NAC predictive parameters are important, namely the histological type and ER, PR, HER2, Ki67 to define molecular classes of breast cancer. The residual cancer burden method is the recommended standardised method: pCR = ypT0/Tis ypN0. pCR is a favourable prognostic marker at the individual level and its prognostic value is greatest in aggressive subtypes of breast cancer. However, pooled analyses at a trial level could not validate pCR as a surrogate marker of EFS and OS. Other biomarkers are needed to define prognosis after neoadjuvant chemotherapy.

MRI as an Imaging Biomarker of Response Evaluation: Response-Adapted Strategies

Women who receive NAC are imaged with MRI before, during and after treatment. **Before treatment** the baseline MRI scan assesses the morphology and extent of the breast cancer. **During treatment** MRI scans are performed to monitor early response to NAC and to predict non-responders. **After treatment** the MRI scan is conducted to inform surgical planning, to predict residual disease or pathologic complete response (pCR) and to predict relapse-free survival (RFS) and overall survival (OS).

Predicting Residual Disease after NAC

MRI is around 74% accurate at predicting residual disease (Chen et al. 2008; de los Santos 2013). However, accuracy is variable, and it depends on the definition of pCR (Marinovich et al. 2013a). MRI has been shown to underestimate and to overestimate the size of tumours that respond to chemotherapy (Chen and Su 2013; Marinovich et al. 2013b). Nevertheless it is superior to ultrasound (US), mammography (MG) and clinical examination for this purpose (Orel 2008; Marinovich et al. 2015).

MRI is most accurate at discerning breast cancer mass - the clear tumour boundary and any concentric shrinkage. MRI is less accurate at discerning non-mass breast cancers— invasive lobular carcinoma, and tumours with extensive ductal carcinoma in situ (DCIS) component (Chen et al. 2008; Bahri et al. 2009; Mukhtar et al. 2013; Vriens et al. 2016).

Three MRI phenotypes have been identified (**Figure 1**); phenotypes 2 and 3 are the most common.

Triple-negative breast cancer is more often phenotype 1 and 2. Hormone receptor positive (HR+) cancers are more often diffuse (phenotypes 3, 4 and 5). MRI images show higher concordance with tumour size in triple-negative breast cancers (Mukhtar et al. 2013).

Complete Remission

In radiology complete response does not equal pathological complete response (pCR). Radiological complete response could be defined as complete absence of pathological contrast enhancement in the original tumour bed on MRI after NAC (Loo et al. 2016).

MRI had the greatest negative predictive value (NPV) for triple negative and HER2+ tumours (Boughey et al. 2014; de Los Santos et al. 2013; Fukuda et al. 2016).

MRI assessment for complete remission has been shown to underestimate residual tumour by around 40% according to type of NAC regimen (eg, Denis et al. 2004). The issues are that there may be multiple small foci (<5mm) and contrast enhancement too weak in these studies.

There may also be overtreatment of patients with pCR, as surgical resection may not improve loco-regional control and thus outcome (Straver et al. 2010)

Outcome after NAC

After treatment the aim of imaging is to predict outcome—RFS/OS. Outcomes after NAC are similar to patients treated with adjuvant chemotherapy (Rastogi et al. 2008; van der Hage et al. 2001; Kuerer et al. 1999). Patients who show pCR have better survival



Claudette Loo

Radiologist
Netherlands Cancer Institute
Amsterdam, the Netherlands

c.loo@nki.nl

Federica Pediconi

Assistant Professor
of Radiology
Sapienza University
Rome, Italy

federica.pediconi@uniroma1.it

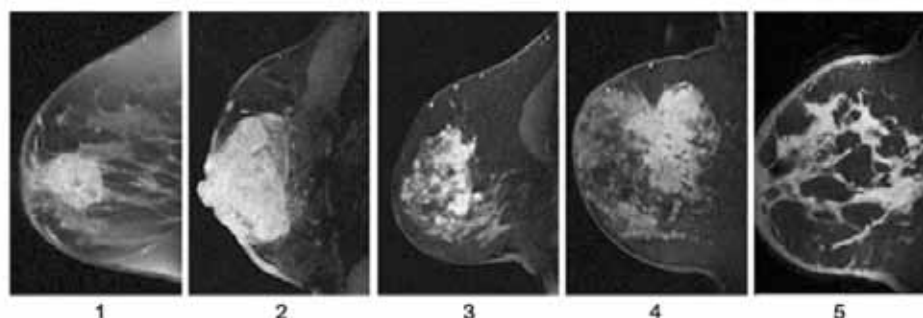


Figure 1. Examples of each of the five MRI phenotypes: 1 well defined, unicentric mass; 2 well defined, multilobulated mass; 3 area enhancement with nodularity; 4 area enhancement without nodularity; 5 septal spreading

Source: Mukhtar et al. (2013) Reproduced under CC BY 2.0 (creativecommons.org/licenses/by/2.0)

	ACOSOG Z1071 Alliance (Boughey et al. 2014)	TBCRC 017 (de los Santos 2013)
	N =756	N=746
Triple Negative	38.2%	37%
HER2-positive	45.4%	38%
ER-positive/HER2-negative	11.4 %	13%

Table 1. Retrospective analyses by de los Santos (2013) and Boughey (2014) of pCR rates after NAC showed pCR by hormonal receptor status determined by immunohistochemical phenotype.

outcome (Rastogi et al. 2008; Kuerer et al. 1999). Thus pCR is used as a surrogate endpoint for disease-free survival (DFS) and overall survival (OS), but there is no standardised definition of pCR and it is variable in different breast cancer subtypes (von Minckwitz et al. 2012).

Breast Cancer Subtypes

A pooled analysis of more than 6000 patients found that:

- pCR defined as no invasive & no in situ residuals in breast & nodes had the best predictive value
- pCR is suitable in HER2+, triple negative (TN) and luminal B tumours
- pCR in TN and HER2+ tumours was associated with excellent prognosis (von Minckwitz et al. 2012)

pCR is not suitable as a surrogate endpoint for patients with luminal A (ER-positive HER2-negative, grade 1-2) tumours. A pooled analysis could not validate pCR as a surrogate endpoint for improved event free and overall survival (Cortazar et al. 2014).

Several trials have assessed the predictive value of MRI for RFS/OS. The multicentre ACRIN6657/I-SPY trial found that MR imaging tumour volume measurements were better than clinical assessment (Hylton et al. 2012). Other trials have investigated dynamic contrast-enhanced MRI imaging parameters as well as prognostic factors such as changes in tumour size and transfer constant (Ktrans) (Li et al. 2011; Pickles et al. 2009; Ah-See et al. 2008; Yu et al. 2007), concluding that some can predict final clinical and pathologic tumour response. Partridge et al. (2005) found that initial tumour volume rather than tumour diameter was more predictive of RFS after NAC.

A multicentre study that analysed 162 breast cancer cases for functional tumour volume (FTV) and RFS found that FTV is a strong predictor of RFS (stronger

than pCR), and that FTV during and after NAC is predictive of RFS (Hylton et al. 2016). The strongest predictive performance was found to be that combining MRI (FTV), histopathology (pCR) and breast cancer subtype (HR/HER2).

“ MR IMAGING HELPS TO SHOW DIFFERENCES IN TREATMENT RESPONSE AMONG BREAST CANCER SUBTYPES ”

Choi et al. (2016) showed that background parenchymal enhancement (BPE) of the contralateral breast is associated with outcome, in a retrospective study of 93 cases. In a multivariate analysis, they showed that high BPE on pre NAC MRI and Triple negative breast cancer is independently associated with worse RFS.

A study from the Netherlands Cancer Institute (Loo et al. 2016) evaluated in 272 women whether response evaluation by MRI is associated with RFS after NAC in ER+ HER2- (luminal) breast cancer. The results showed that a complete response at MRI after NAC in ER+ breast cancer is associated with an excellent prognosis.

Conclusion

MR imaging helps to show differences in treatment response among breast cancer subtypes. This may lead to tailored imaging approaches with improved predictive performance, says Dr. Loo. However, the predictive performance of MRI differs among breast cancer subtypes. MRI is most accurate when imaging breast cancers that have mass lesions, are triple-negative and HER2+.

Surgery of the breast after preoperative chemotherapy

Breast conservation is not improving despite better pCR rates ... Why?

In prospective randomised trials in the neoadjuvant setting, Taxane-based (Bear et al. 2003) and HER2 targeted therapies with dual blockade (Baselga et al. 2012; Guarneri et al. 2012) have resulted in a marked (up to twofold) increase in pathologic complete response (pCR) rates compared with the reference arms. However, this did not translate into higher rates of breast-conserving surgery in down-staged patients after chemotherapy (Bear et al. 2003; Baselga et al. 2012; Guarneri et al. 2012).

Several factors may have contributed to this situation, one of these being that surgical treatment of the breast after chemotherapy largely relies on retrospective analyses, although sometimes of prospectively recorded data. As a result of this lack of high level evidence, little to no consensus exists on a number of surgical issues. Taken altogether, this may have led to insecurities for breast preservation both on the patient and the physician side, suggests Prof. Dubsy.

Is resection in the new margins adjusted for response after NAC a safe surgical procedure?

The long-term follow-up of several large cohorts provides evidence for the safety of breast conservation in the neoadjuvant setting, where no subgroup (including patients with multifocal or multicentric disease) can be precluded from breast-conserving surgery (BCS) if clear margins are obtained.

Trials comparing locoregional recurrence (LR) rates in patients undergoing BCS after NAC versus initial BCS followed by chemotherapy have shown no significant differences after adjustment for age and initial stage (Wolmark et al. 2001; van der Hage et al. 2001; Mittendorf et al. 2013). In the MD Anderson Cancer Center cohort (Mittendorf et al. 2013), factors for LR were pejorative clinico-pathologic factors, multifocal residual disease on pathology, and close (< 2mm) or positive margins. Similarly, the German Breast Group neoadjuvant trials (Ataseven et al. 2015) showed that

breast conservation was feasible for initial multifocal or multicentric disease at the condition of tumour-free margins or pathologic complete response.

Based on all these results, Pr. Dubsy has suggested that: no tumour on ink and in case of close (<2mm) margins and multifocal residual disease, reexcision should be considered. Furthermore, resection within new margins, which will allow preservation of breast tissue, appears as a major goal of surgery after NAC.

“ THE OPTIMAL SURGICAL PLAN RELIES ON OPTIMAL INTERDISCIPLINARY COMMUNICATION ”

Keys to performing optimal surgery after primary chemotherapy

First of all, the optimal surgical plan relies on optimal interdisciplinary communication stressed Prof. Dubsy, referring to the triple task of diagnostic, response and intraoperative assessment. The role of breast imaging and image-guided procedures is essential. Radio-histologic documentation and marking of the initial tumour site are key steps.

Regarding response evaluation, the accuracy of MRI has been shown to vary largely upon factors such as tumour subtype, initial morphologic presentation and pattern of response. While effective for assessing triple-negative and HER2-positive tumours, MRI has low accuracy in determining residual oestrogen receptor-positive disease (Loo et al. 2011).

Hence, the contribution of MRI for delineating residual disease and help obtain clear margins should preferably be addressed clinically through radio-surgical discussion of individual cases, and for further scientific evidence through joint elaboration of trial protocols. ■



Peter Dubsy

Associate Professor of Surgery
Medical University of Vienna
Vienna, Austria

peter.dubsy@meduniwien.ac.at

Head of Breast Center
Hirslanden Klinik St. Anna
Lucerne, Switzerland

peter.dubsy@hirslanden.ch

Fabienne Thibault

Radiologist
Institut Curie
Paris, France



REFERENCES

For full references, please email edito@healthmanagement.org or visit the website <https://iii.hm/Bb3>